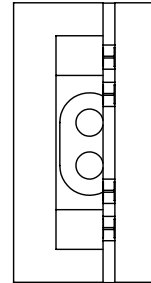
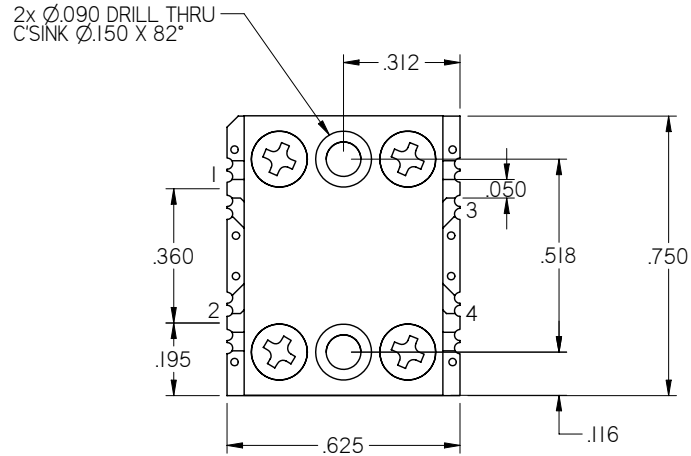
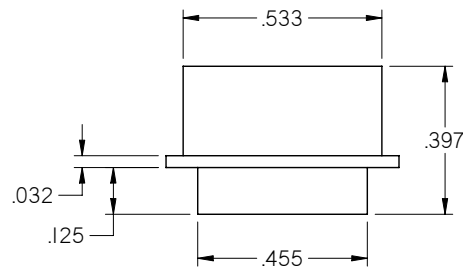


NOTE: PROPER EXTERNAL HEATSINK REQUIRED

REVISION			
LTR.	DESCRIPTION	DATE	APPVL.
-	PRELIMINARY	06/27/10	RJB



ALL OUTSIDE EDGES AND SIGNAL TRACES ARE EDGE PLATED



ELECTRICAL SPECIFICATION DIRECTIONAL COUPLER	
FREQUENCY RANGE (MHZ)	20-1000
COUPLING (dB) NOM.	15
COUPLING TOL. (dB) MAX.	±2.0
COUPLING VARIATION (dB) MAX.	±2.0
INSERTION LOSS (dB) MAX.	0.7
DIRECTIVITY (dB) MAX.	15
VSWR MAX.	1.4 : 1
IMPEDANCE (OHMS) NOM.	50
INPUT POWER (WCW)	50
BASE PLATE TEMPERATURE RANGE (°C)	-40 TO +85

NOTE: INSERTION LOSS DOES NOT INCLUDE THEORETICAL LOSS

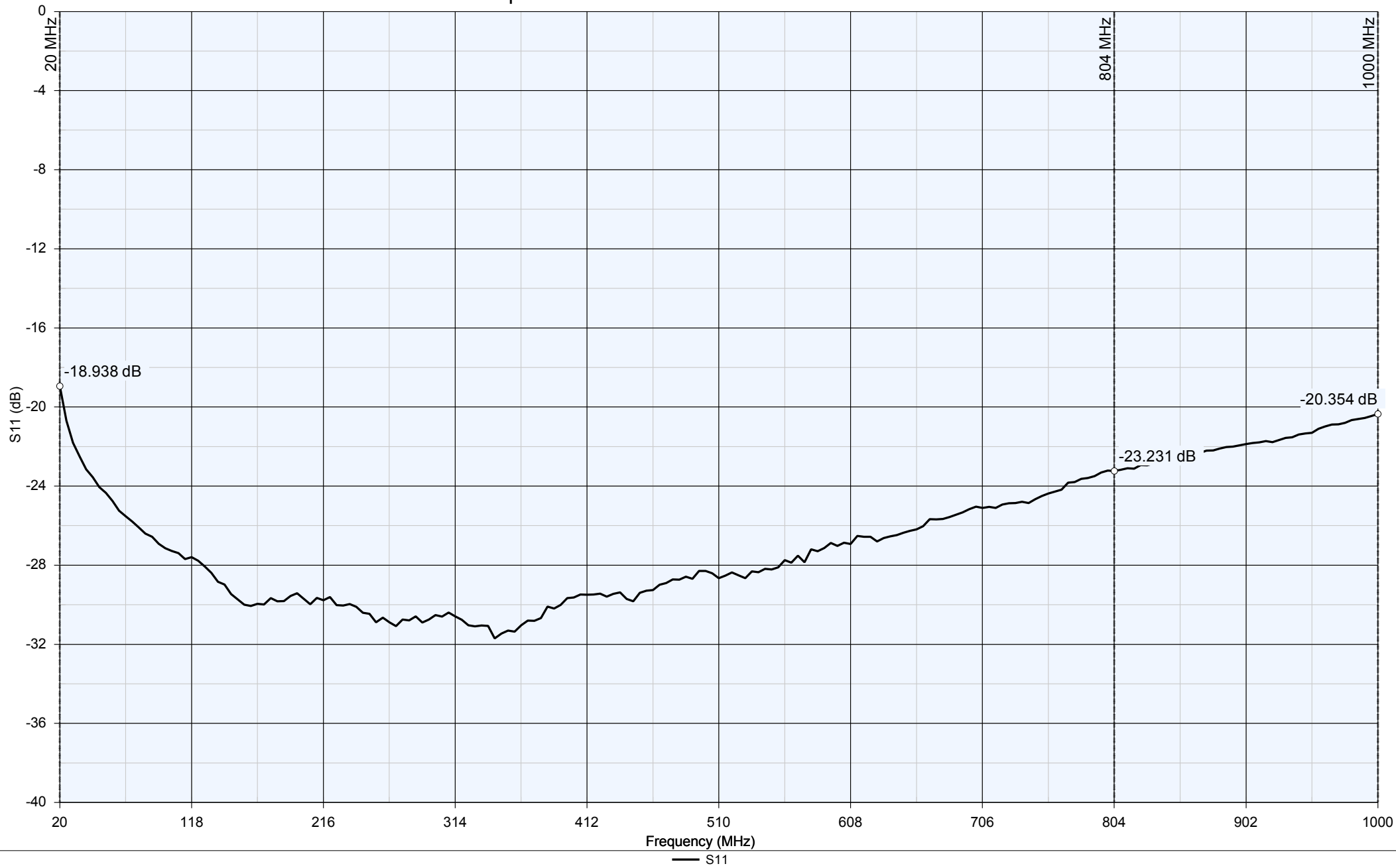
PORT	DESIG.
1	INPUT
2	OUTPUT
1-3	COUPLED
2-4	COUPLED

RoHS
Compliant

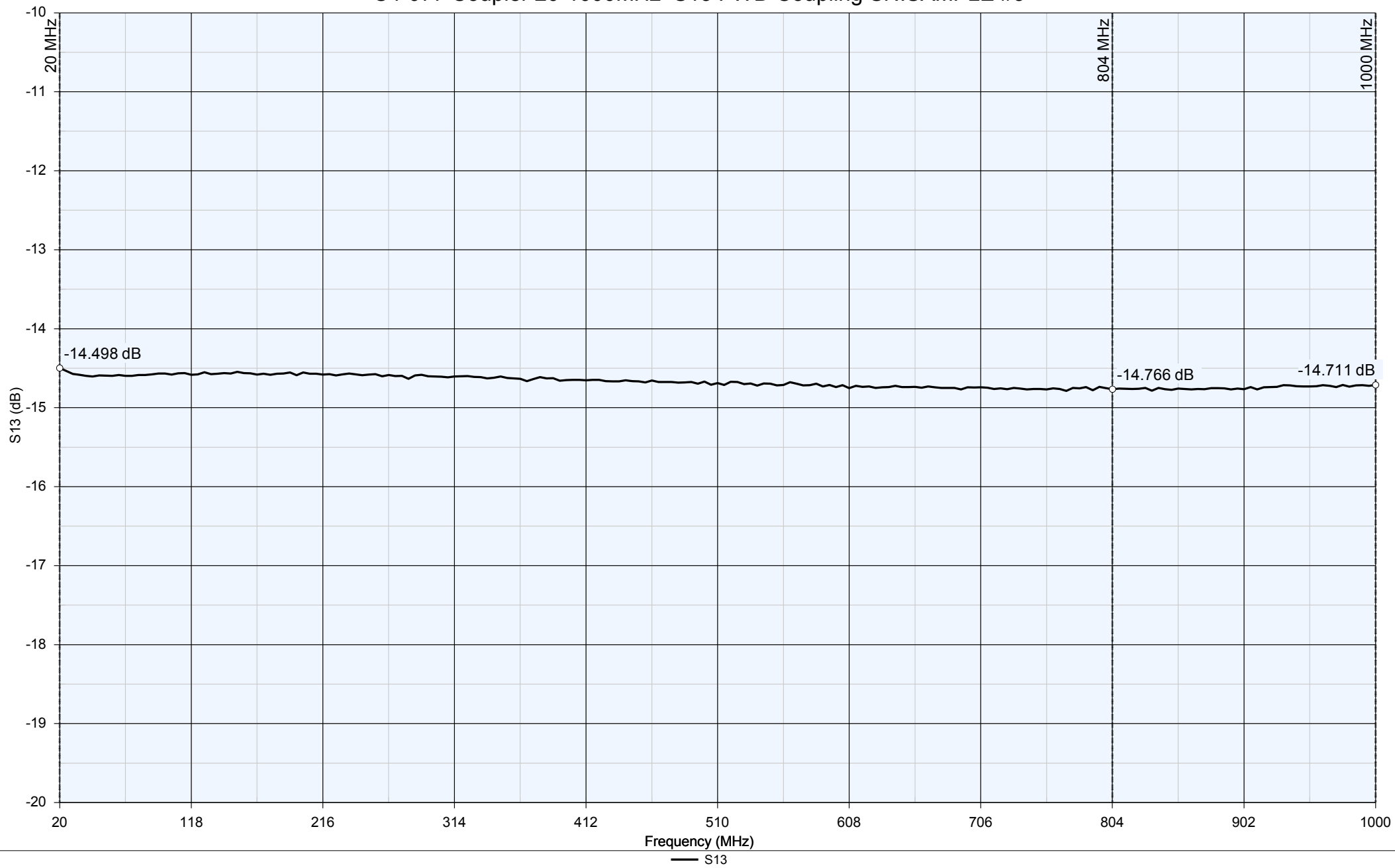
NOTE:
SPECIFICATION SUBJECT TO CHANGE
WITHOUT NOTICE.

UNLESS OTHERWISE SPECIFIED DRAWING PRACTICES PER MIL-STD-100		DRAWN RJB	DATE 6/28/2010	IFE ENGINEERING 40 PARKER ROAD, FAYAN CT 06255
TOLERANCES		ENGRG APPD	DATE	
ANGLES ±1/2°		MFG APPD	DATE	TITLE OUTLINE DRAWING C4-077
.XX ±.01		QA APPD	DATE	
SURFACE ROUGHNESS 63		RELEASED	DATE	
REMOVE BURRS SHARP EDGES		MATERIAL: SEE NOTE 1		SIZE B
FINISH: SEE NOTE 2		DRAWING NO. 100-077-181		CODE IDENT NO. OUFA1
		DRAWING NO. 100-077-181		DRAWING NO. 100-077-181
		RELEASED		REV -
		SCALE N/A		SHEET 1 OF 1

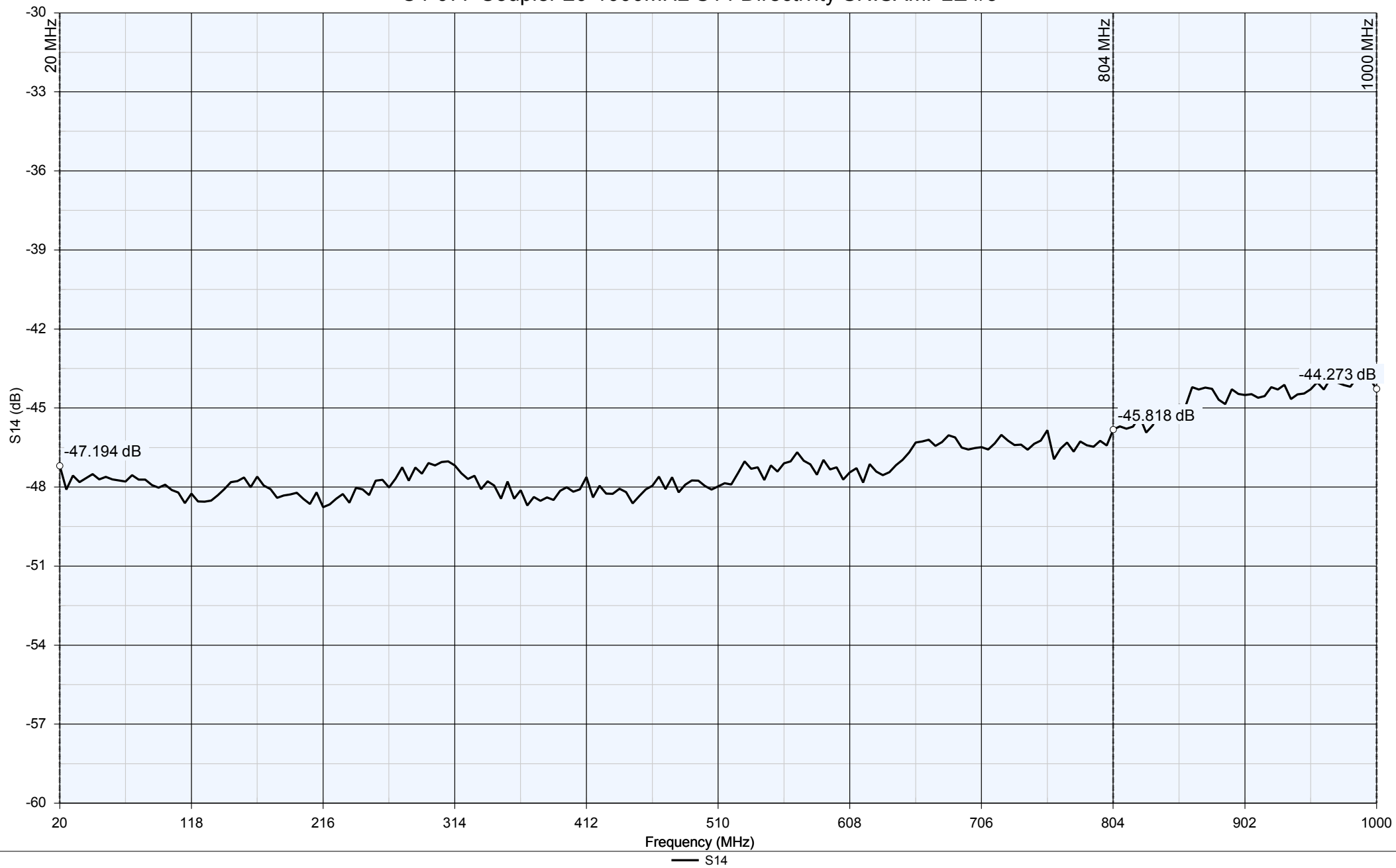
C4-077 Coupler 20-1000MHz S11 Return Loss SN: SAMPLE #3



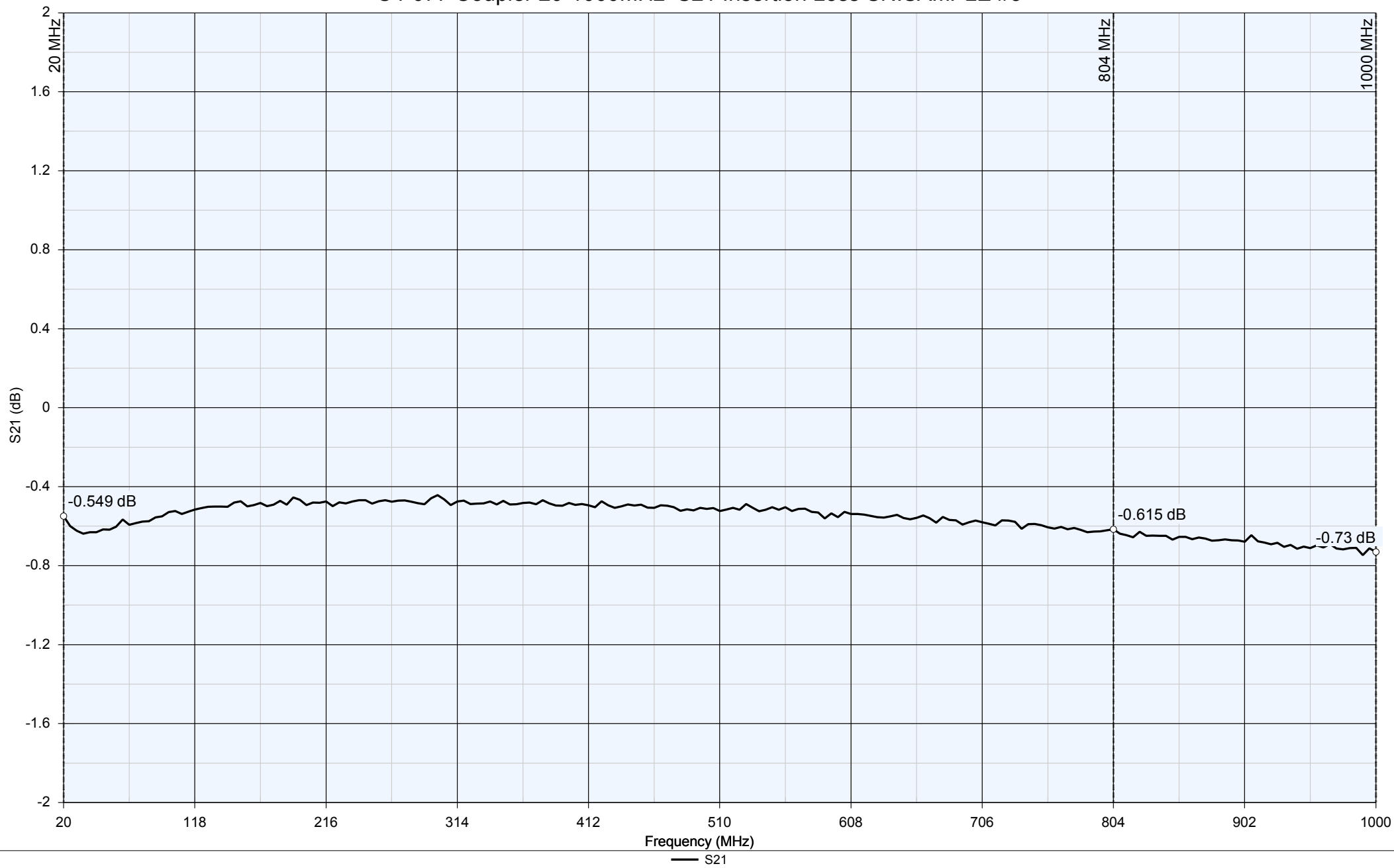
C4-077 Coupler 20-1000MHz S13 FWD Coupling SN:SAMPLE #3



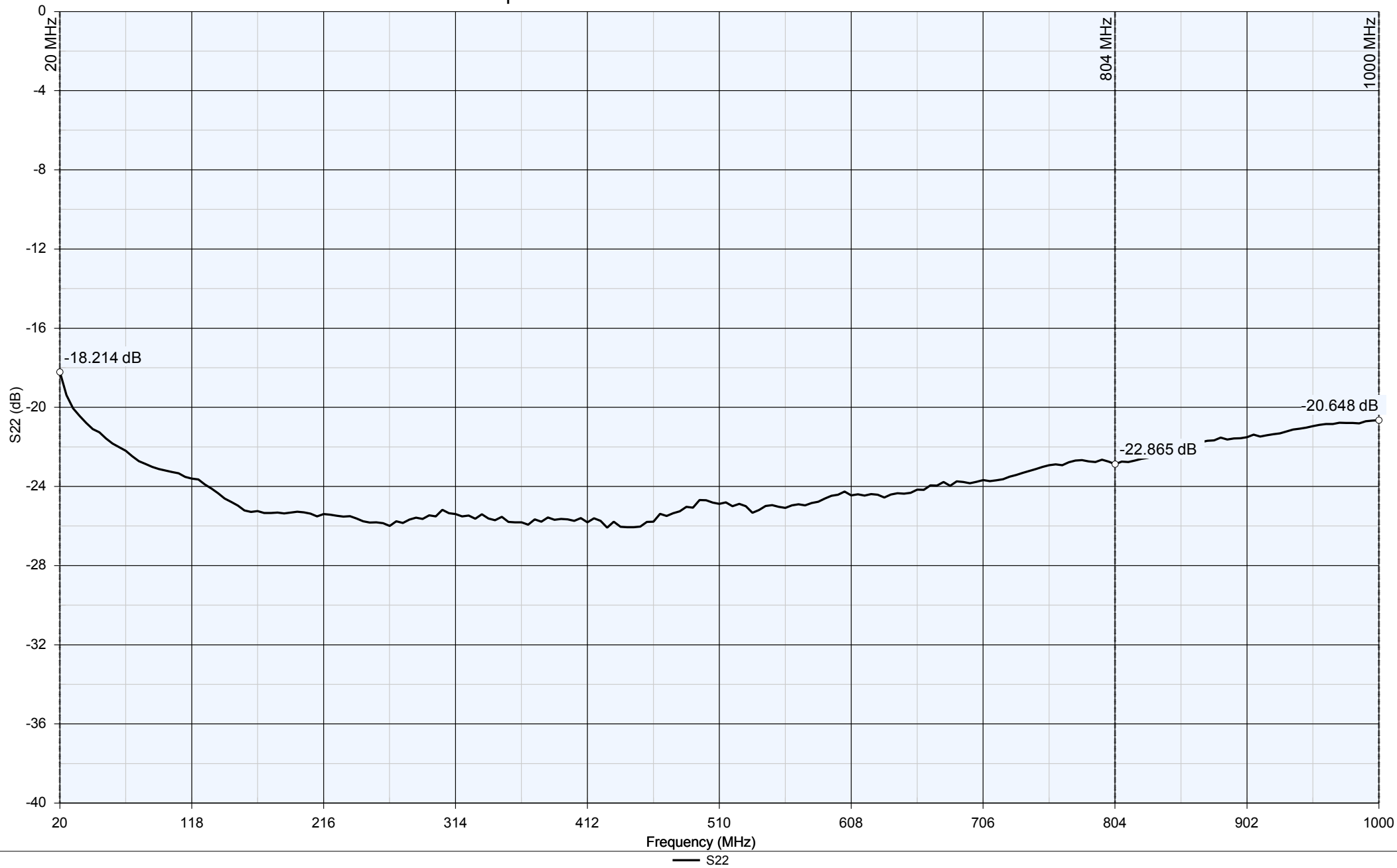
C4-077 Coupler 20-1000MHz S14 Directivity SN: SAMPLE #3



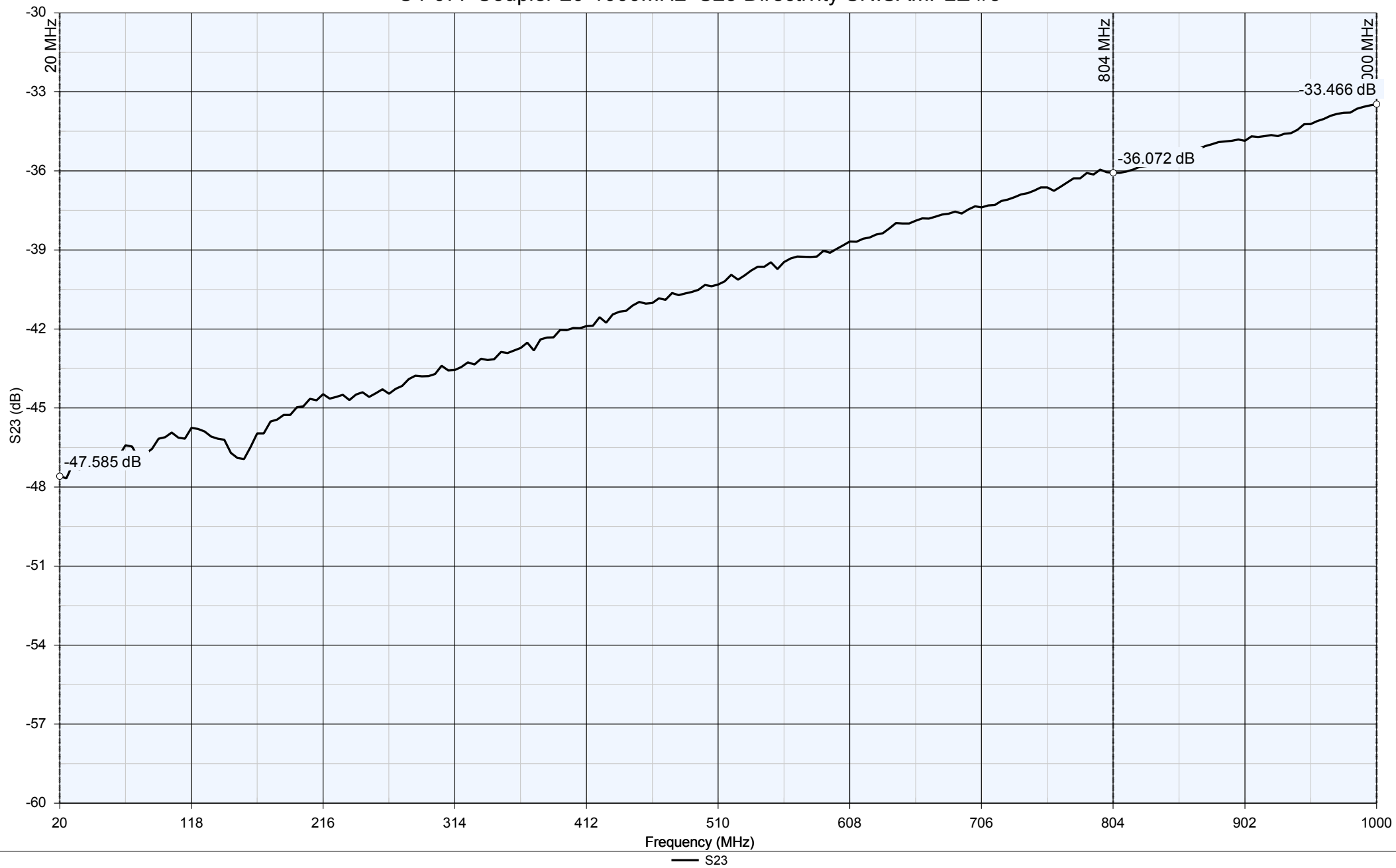
C4-077 Coupler 20-1000MHz S21 Insertion Loss SN:SAMPLE #3



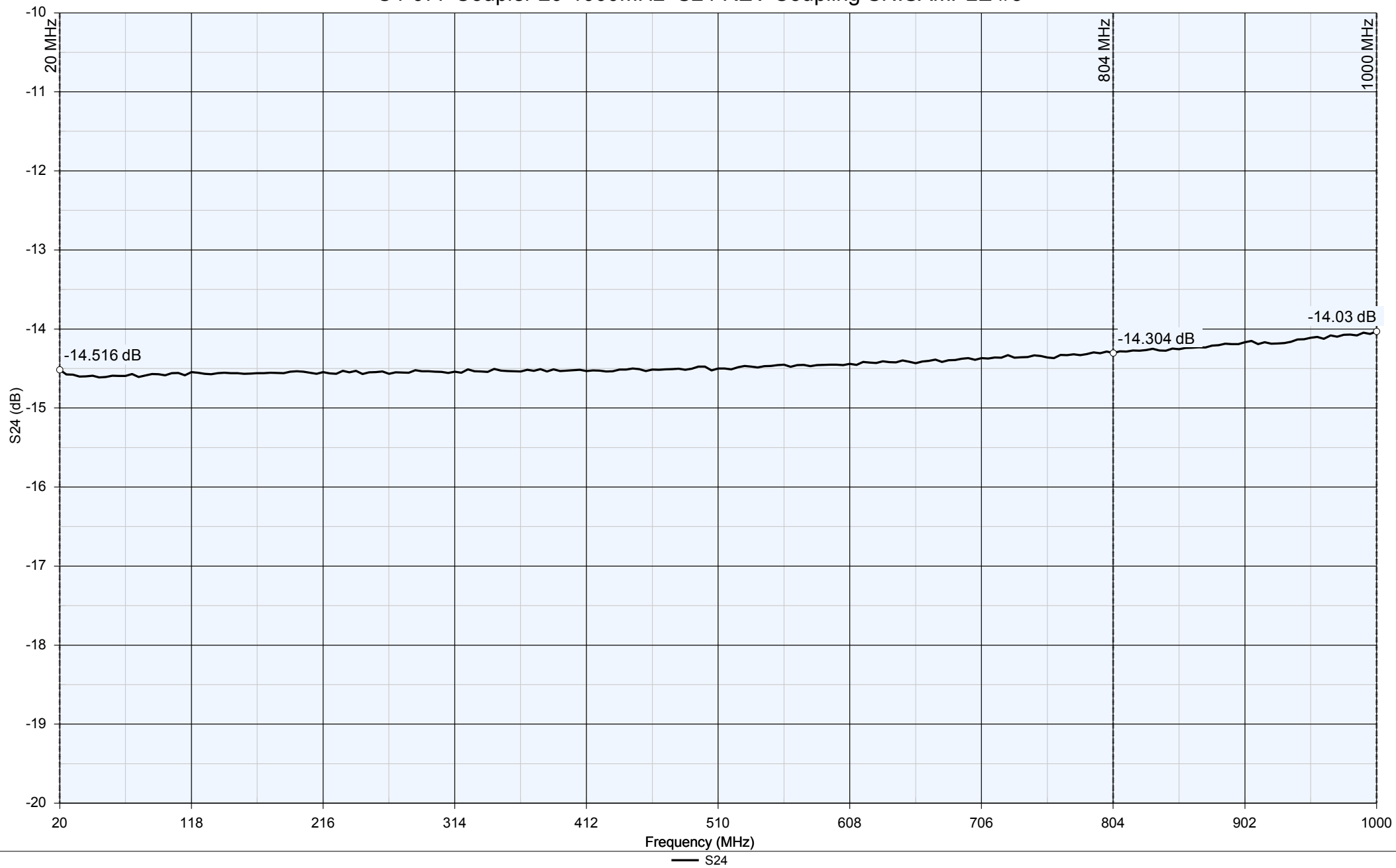
C4-077 Coupler 20-1000MHz S22 Return Loss SN:SAMPLE #3



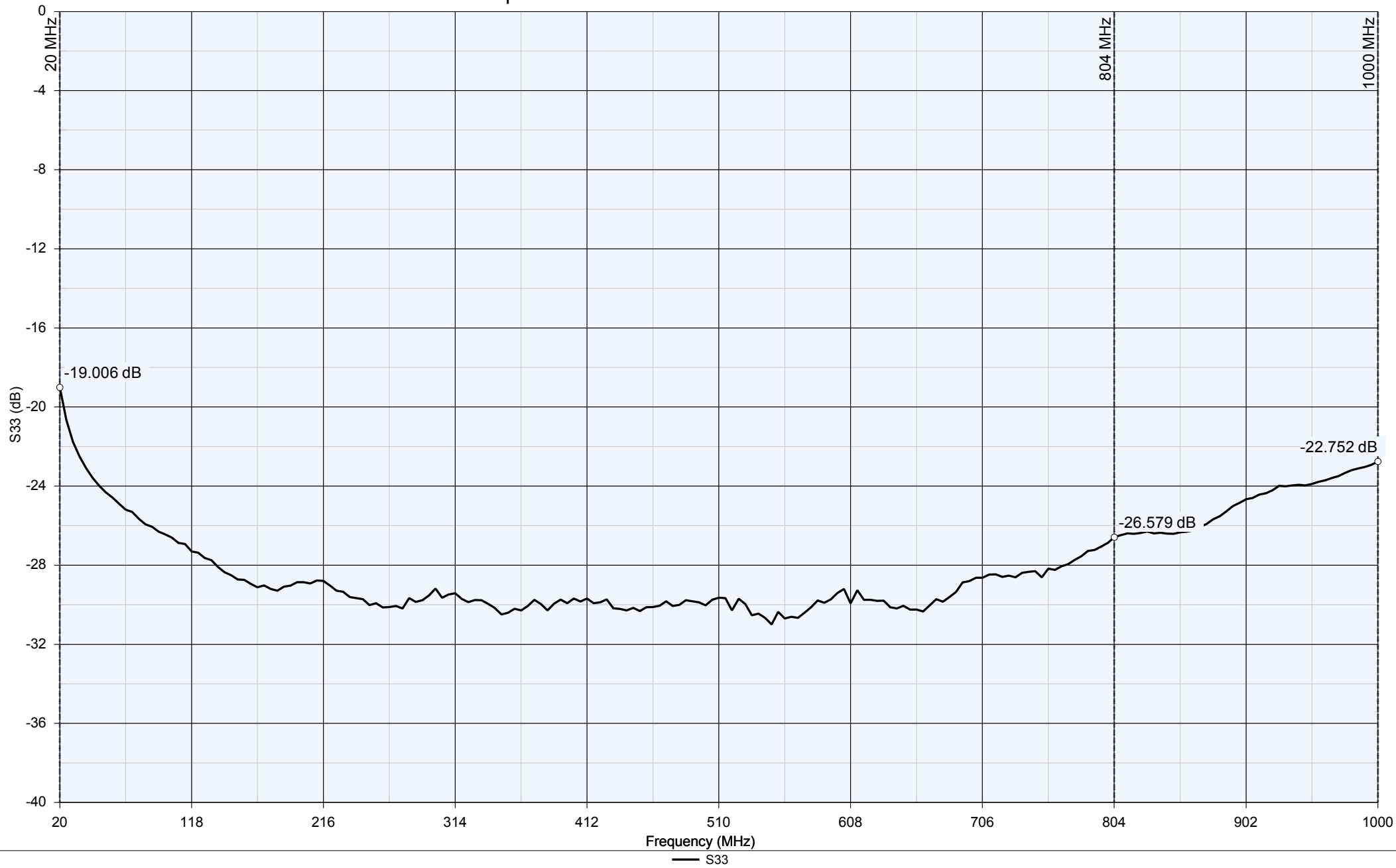
C4-077 Coupler 20-1000MHz S23 Directivity SN:SAMPLE #3



C4-077 Coupler 20-1000MHz S24 REV Coupling SN:SAMPLE #3



C4-077 Coupler 20-1000MHz S33 Return Loss SN: SAMPLE #3



C4-077 Coupler 20-1000MHz S44 Return Loss SN: SAMPLE #3

